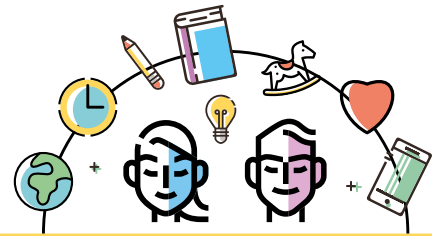


The PPT and special education assistance



If your child is faced with special challenges, he or she may have the right to special education assistance. Your child may have the right to such help from birth, regardless of whether or not he or she attends kindergarten.

Special education assistance can for example be given in the form of physical training, stimulation of the child or as counselling for kindergarten staff. As a parent you always have the right to receive offers of advice and guidance. The help provided shall be adapted to your child's needs.

If you, or others who know your child, are concerned about his or her development, the municipality and the PPT must assess and provide advice on what your child needs. Prior to your child receiving special education assistance, the municipality must pass an individual administrative decision.

The PPT may engage in interdisciplinary collaboration at the local level, for example with the health services or NAV, and at the national level with e.g. Statped or psychiatric services for children and young people (BUP). The PPT is bound by a duty of confidentiality.

What is the meaning of Educational and Psychological Counselling Service (PPT)

A public service agency that provides advice and guidance to municipalities on the establishment of measures and initiatives for children with special needs.

Expert assessment

A document issued by PPT that determines whether the child is in need of special education assistance, and advises on what kind of services the child, parents and / or kindergarten should be offered.

Individual administrative decision

A letter from the municipality that informs you whether or not your child has the right to receive special education assistance, and if so what form this will take. Such decisions can always be appealed.

What can I expect from the municipality?

The municipality shall

- ensure that the child's best interests are safeguarded
- involve and consult you prior to taking decisions that affect your child
- conduct interviews with the child and parents and perform the necessary assessments of the child
- request that PPT provides an expert assessment if you request this, or if the municipality or kindergarten is of the opinion that your child is in need of special education assistance
- adopt an individual administrative decision that states whether or not your child is in need of special education assistance, and in such case describe what form this will take
- provide the child with the special education assistance laid out in an individual administrative ruling
- offer you parental counselling
- ensure that an annual report is prepared on the special education assistance and your child's progress and development

What can I do?

As the parent, you

- can demand that the municipality looks into whether your child is in need of special education assistance
- can discuss your concern with the PPT and kindergarten prior to referral
- shall be involved and consent before the municipality asks PPT to assess your child
- shall be involved and consent before the municipality rules your child is to receive special education assistance
- shall receive an annual written report on the help your child is receiving and an assessment of the progress and development of your child
- can lodge an appeal if your child is not provided with special education assistance
- can appeal the content, implementation or organization of help